

Infrastructure for Resilient Island States (IRIS)

Enabling Resilient, Sustainable and Inclusive Infrastructure Transitions in Small Island Developing States (SIDS)





**Mr Kamal Kishore,
Member Secretary NDMA India and Co-chair of
CDRI's Executive Committee**

Mr. Stuart Brown, Moderator
Assistant Director, Climate and
Development integration Unit, DFAT



Mr Jamie Isbister
Head of the Strategic Infrastructure Division at
Department of Foreign affairs and Trade (DFAT)

Mr Jack Whelan
APCP Consultant to IRIS



Enabling resilient, inclusive and sustainable infrastructure transitions in Small Island States (SIDS)



reflect on resilient infrastructure priorities for Pacific region and key enabling factors that will facilitate the implementation of the IRIS programme.

Jack Whelan
APMCDRR Brisbane 2022

Principles for **RESILIENT INFRASTRUCTURE**

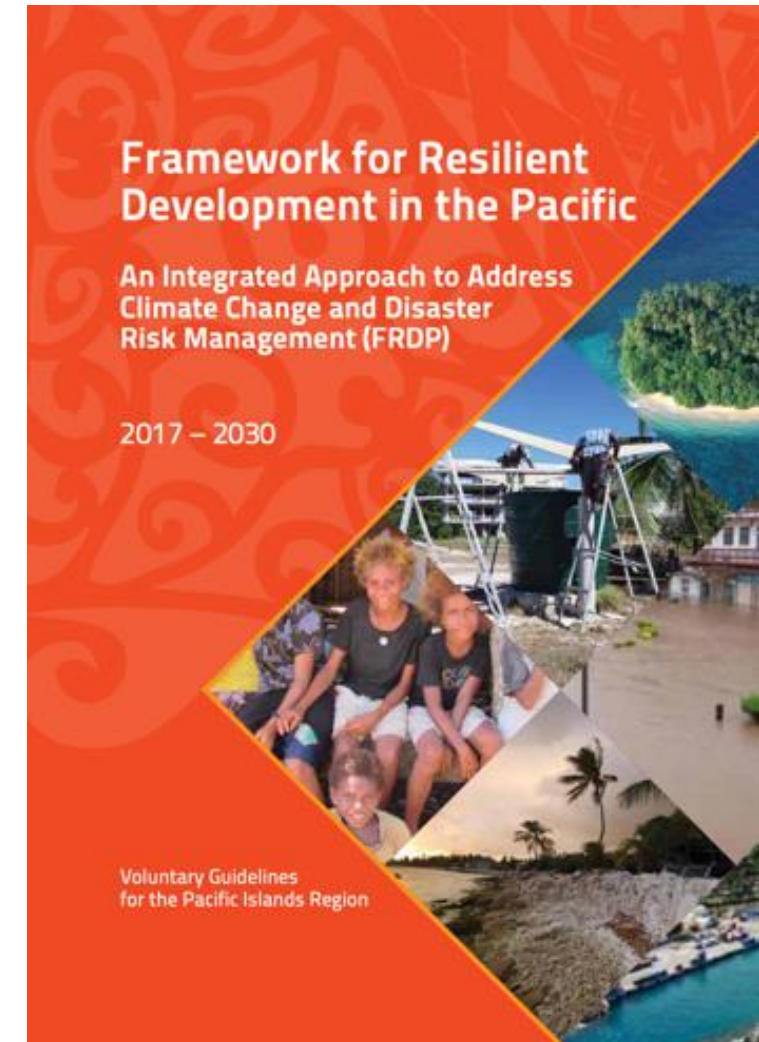


Pacific consultation (23-24 August) key findings



3 x 'I's = Integration, Information, Investment

- Draw linkages with international goals/agendas – Paris Climate Agreement, SDGs
- Learn lessons from recent disasters, Pacific specific
- Importance of regional cooperation – supported by, aligned with, regional institutional frameworks
- Strengthen information / data / technical knowledge sharing, strategies, plans & early-warning mechanisms
- Broaden DRR to embrace 'economic' & 'social' infrastructure
- COVID-19 pandemic most severe economic shock to the region, together with climate change impacts and disasters present a new “riskscape” in the Pacific



Pacific consultation (23-24 August) key findings

Maintain structural emphasis in three IRIS pillars – and the IRIS Pacific approach

| RESILIENT | INCLUSIVE | SUSTAINABLE |
|--|---------------------------------------|--|
| Whole of Government approach | Social engagement at local, prov, nat | Cultural, traditional, technical context |
| Maintenance = resilience | Community participation | Macro / micro critical infrastructure |
| Culture & Technology combined | Disability inclusion | Sector inter-connectivity |
| Flexible/adaptable policies, NBCs | Women in Infrastructure | Nature based solutions |
| Address policy ≠ compliance disconnect | Inclusive Governance | Donor coordination |
| Supply chain constraints | Affordability | Strategic investment planning |
| Localisation | Localisation | Localisation |

Looking ahead to 2030, beyond Sendai and for IRIS to focus



- \$3.5 billion additional annual funding needed (Lowy Institute)
Infrastructure critical.
- Post-COVID, Pacific facing “**a lost decade of development**”.
- Refine ‘**resilience**’ in the context of Pacific infrastructure
- Ensure **IRIS is ‘fit-for-purpose’**

Key themes emerged from regional consultations, relevant to the **IRIS TA call for proposals**:

- Nature based solutions for coastal protection
- Decision support systems for risk-informed planning
- Capacity building, knowledge exchange & training programs
- Disaster risk financing
- Multi-hazard early warning systems.





**Ms Kilisitina Tuaimei'api,
CEO, Ministry of Finance, Tonga**



**Ms Galumalemana Taatialeoititi A. T Schwalger
CEO, Land Transport Authority, Samoa**



**Ms Riya Rahiman
Lead, Infrastructure for Resilient Island States (IRIS)
CDRI**

Infrastructure for Resilient Island States (IRIS)

Enabling Resilient, Sustainable and Inclusive Infrastructure Transitions in Small Island Developing States (SIDS)

