



ASIA-PACIFIC MINISTERIAL CONFERENCE ON
Disaster Risk Reduction
Brisbane, Queensland, Australia 19–22 September 2022

Partner Event

From Science to Action: Risk informing DRR and development in Asia Pacific using displacement data

Hosted by Internal Displacement Monitoring Centre, Fiji

From Science to Action:

Risk informing DRR &
development in Asia-Pacific
using displacement data



19 | from 16:00-17:00 (AST)
SEPT. | Venue: Mezzanine Room M3

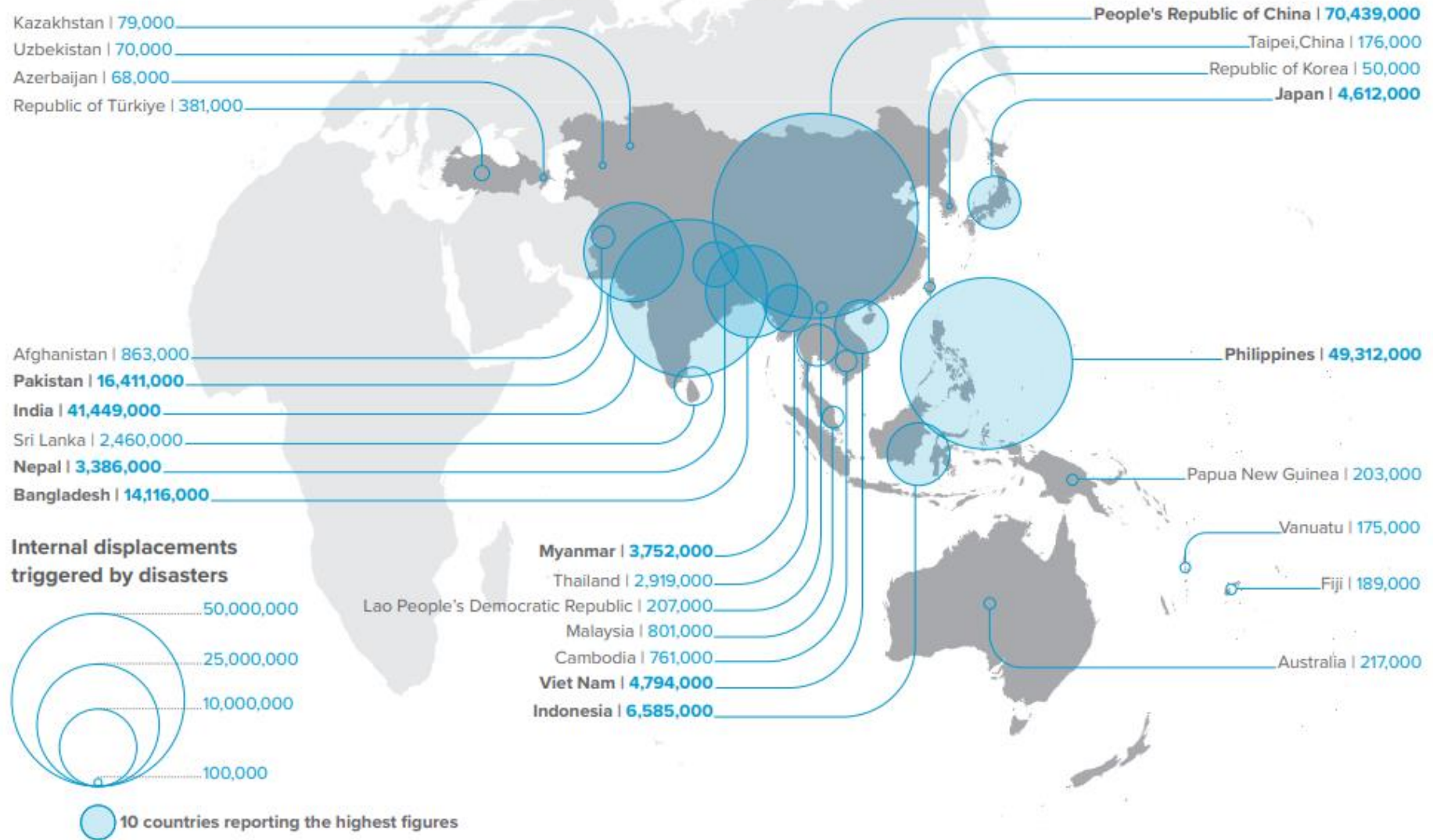


Disaster Displacement in Asia and the Pacific



Disaster displacement in Asia and Pacific

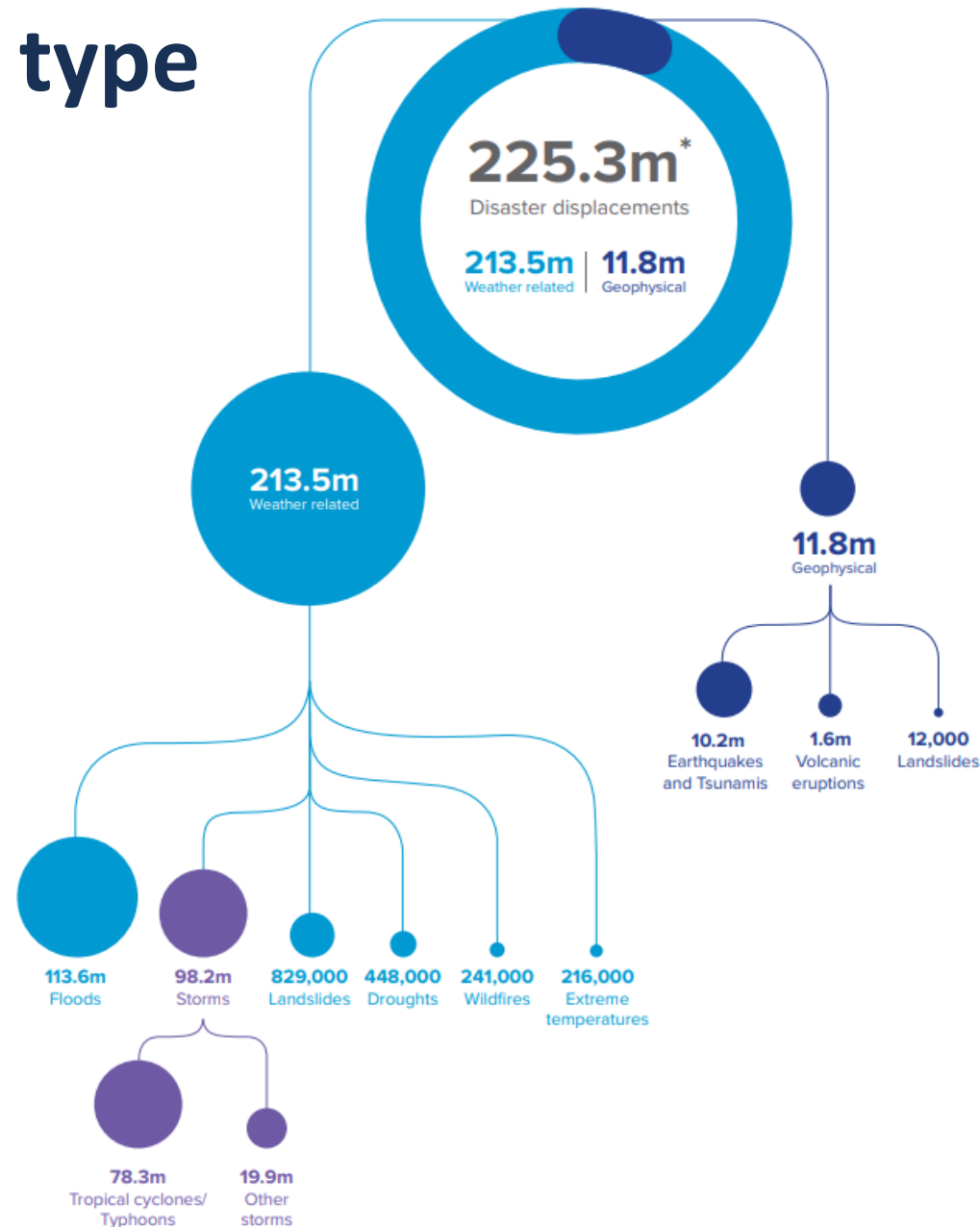
225.3 million internal displacements were recorded during 2010-2021, or 78% of the global total.



Displacement by hazard type

Weather-related hazards, such as monsoon rains, floods, storms, and cyclones, were responsible for **95%** of all disaster displacements.

Although less frequent, **geophysical events** such as earthquakes, tsunamis, and volcanic eruptions triggered an estimated **11.8 million** internal displacements, equivalent to 5.2% of the total.



The Pacific

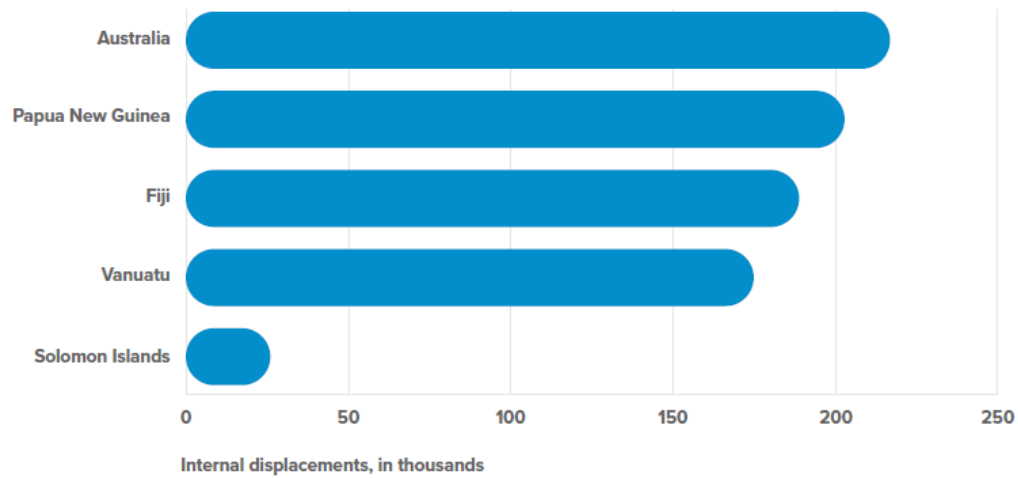


Figure 23: Five Countries and Territories with the most Disaster Displacements in the Pacific (2010–2021)

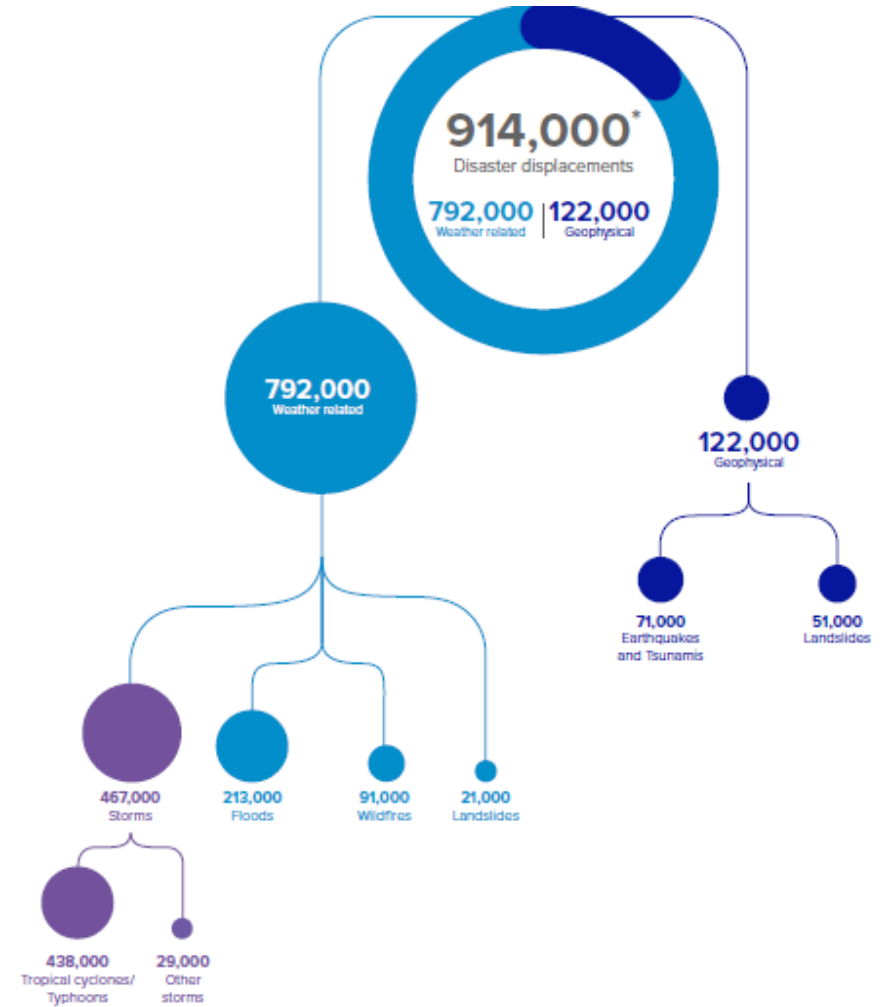


Figure 24: Disaster Displacements in the Pacific: Breakdown by Hazard (2010–2021)

The Pacific

Thousands of people are displaced every year due to sudden and slow-onset disasters.

Small island states bear the greatest displacement risk relative to their population size.

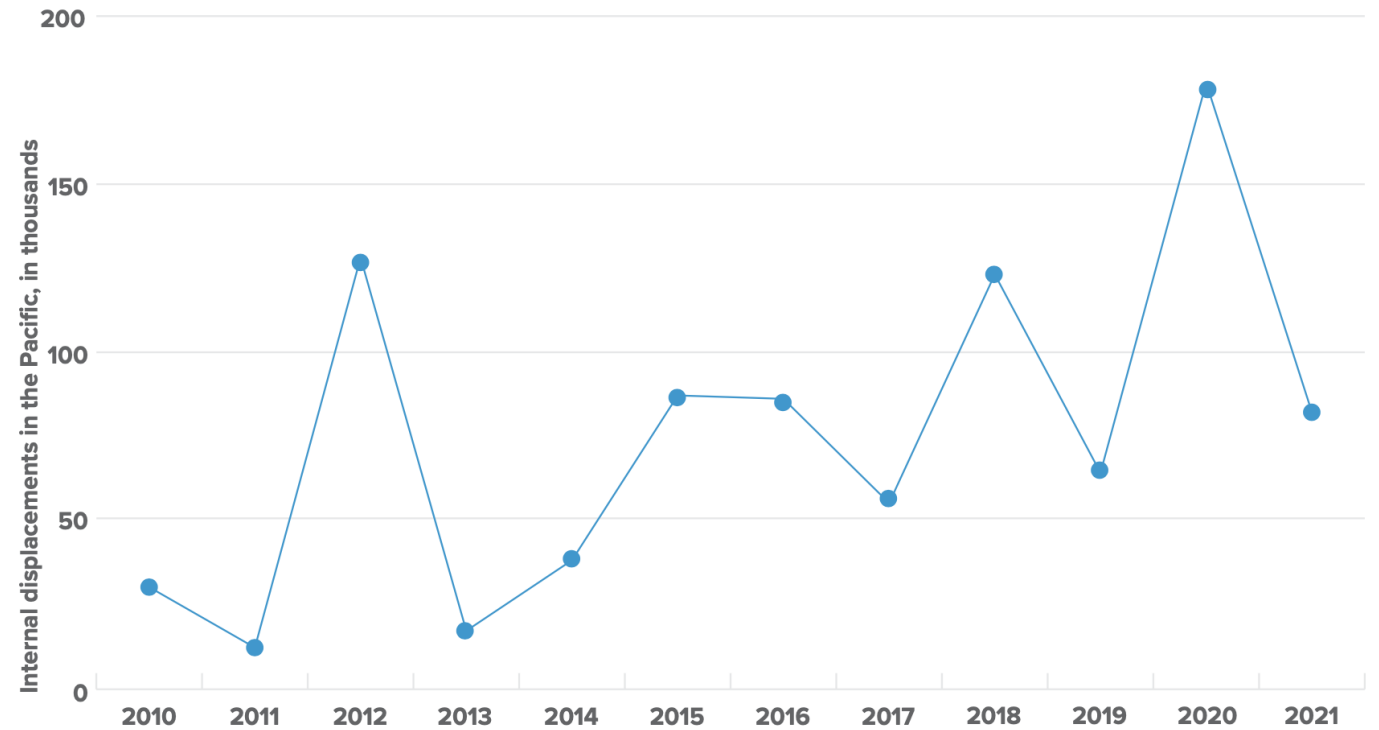


Figure 22: Internal Displacements by Disasters in the Pacific (2010–2021)

Fiji risk profile

- **190,524** disaster displacements (2010-2021)
- About **5,800** people on average are likely to be displaced by sudden-onset hazards in any given year in Fiji
- Fiji's displacement risk is highest with **storm surges**



Vanuatu risk profile

- **176,386** disaster displacements (2010-2021)
- About **3,680** people on average are likely to be displaced by sudden-onset hazards in any given year in Vanuatu
- Vanuatu's displacement risk is highest with **cyclonic winds**

risk
profile

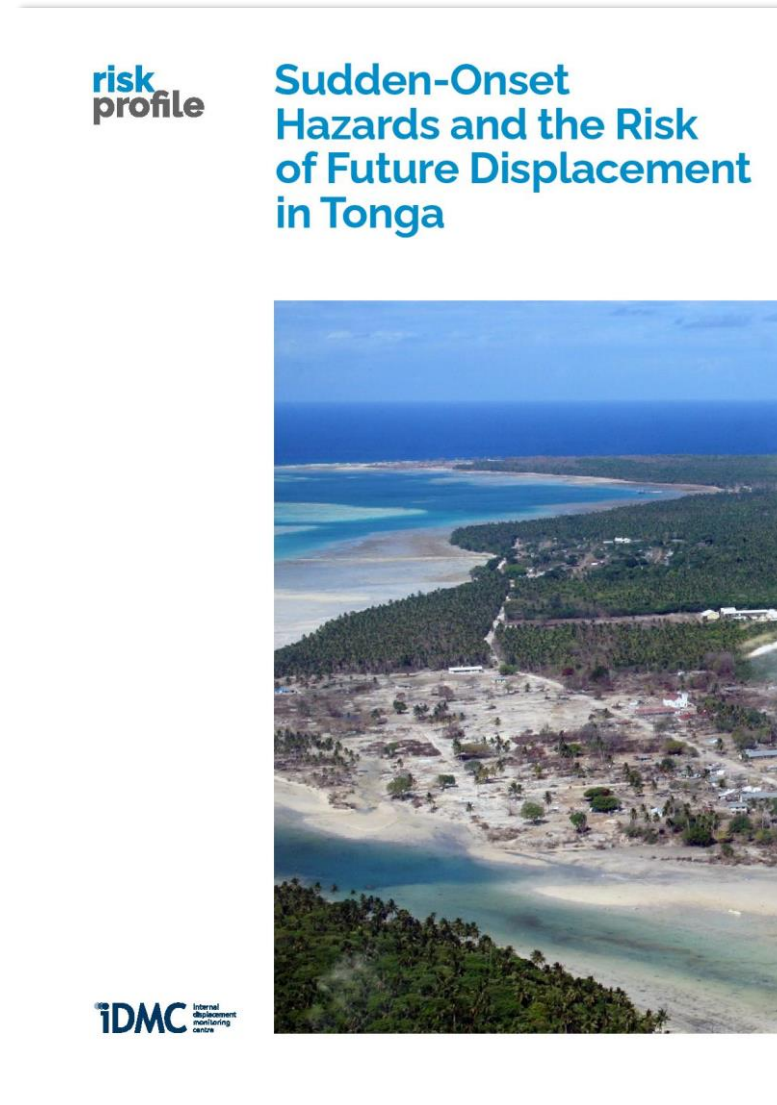
Sudden-Onset Hazards and the Risk of Future Displacement in Vanuatu



iDMC
internal
displacement
monitoring
centre

Tonga risk profile

- **17,000** disaster displacements (2010-2021)
- About **1,229** people on average are likely to be displaced by sudden-onset hazards in any given year in Tonga
- Tonga's displacement risk is highest with **cyclonic winds**



Risk analyses in the Pacific

risk
profile

Sudden-Onset Hazards
and the Risk of Future
Displacement in the
Solomon Islands



iDMC
internal
displacement
monitoring
centre

risk
profile

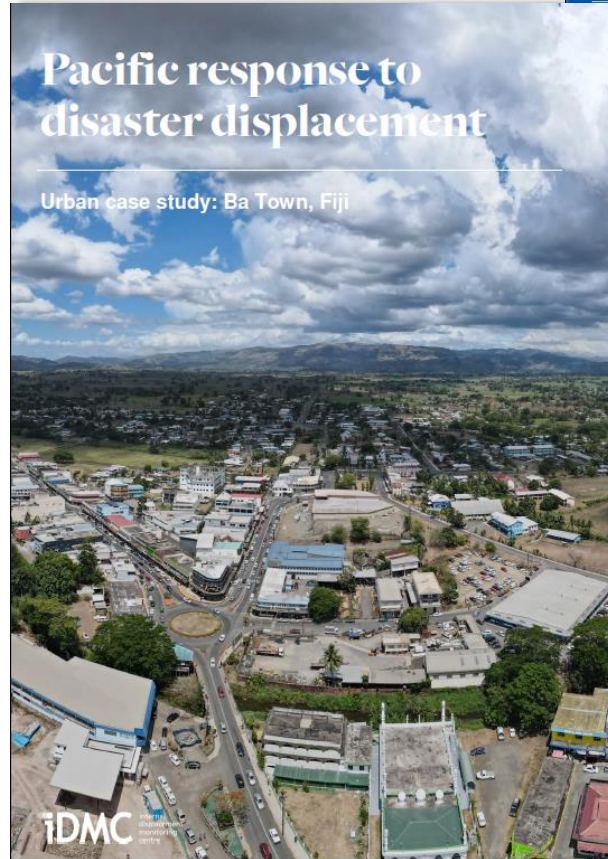
Sudden-Onset Hazards
and the Risk of Future
Displacement in the
Marshall Islands



iDMC
internal
displacement
monitoring
centre

Pacific response to
disaster displacement

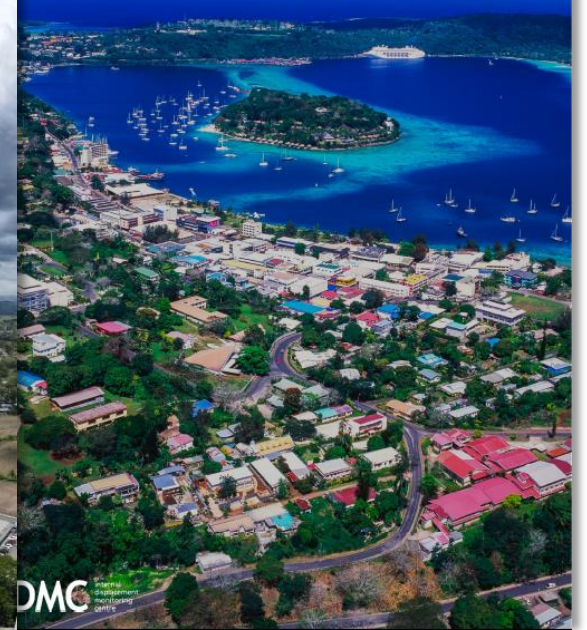
Urban case study: Ba Town, Fiji



iDMC
internal
displacement
monitoring
centre

Pacific response to
disaster displacement

Urban case study: Port Vila, Vanuatu



iDMC
internal
displacement
monitoring
centre

iDMC
internal
displacement
monitoring
centre



Every day, people flee conflict and disasters and become displaced inside their own countries. IDMC provides data and analysis and supports partners to identify and implement solutions to internal displacement.

Join us as we work to make real and lasting change for internally displaced people in the decade ahead.

slido



**Join at slido.com
#APMCDRR22**

ⓘ Start presenting to display the joining instructions on this slide.

slido



Audience Q&A Session

ⓘ Start presenting to display the audience questions on this slide.