

Experiences of Voluntarism in Japan: Some reflections

Rajib Shaw

Professor, Keio University, Japan

Distinguished Professor, Indian Institute of Technology, Guwahati, India

Distinguished Professor, IDMR, Sichuan University, China

Co-Chair, United Nations Asia Pacific Science Technology Advisory Group (AP-STAG)

Coordinating Lead Author (CLA), Asia Chapter, IPCC 6th Assessment Report

Co-Founder, Resilience Innovation Knowledge Academy (RIKA)

www.rajibshaw.org AND www.rikaindia.com

Voluntarism is a basic human character

- Suibodan / Water volunteer
- Shobodan / Fire volunteer
- System existed over hundreds of years
- Example of ring dyke: not structural issue, but voluntarism spirit during flooding

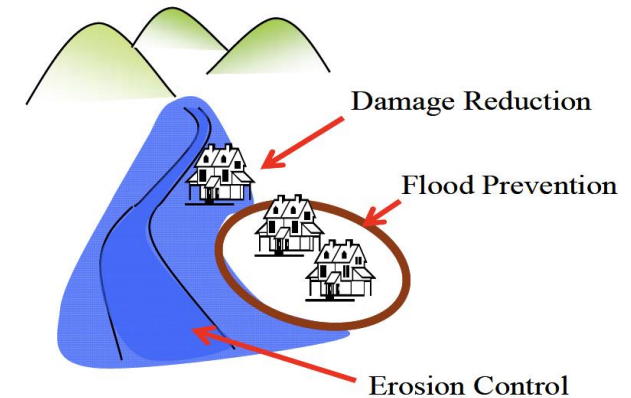


Figure 2. Types of traditional knowledge and technology.

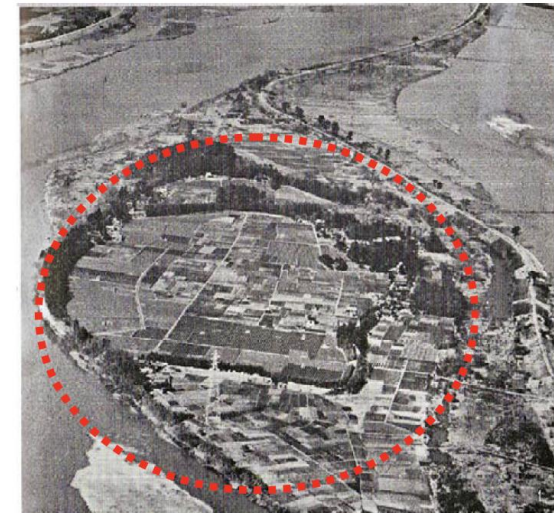


Figure 3. Ring Dyke to protect cluster of houses.

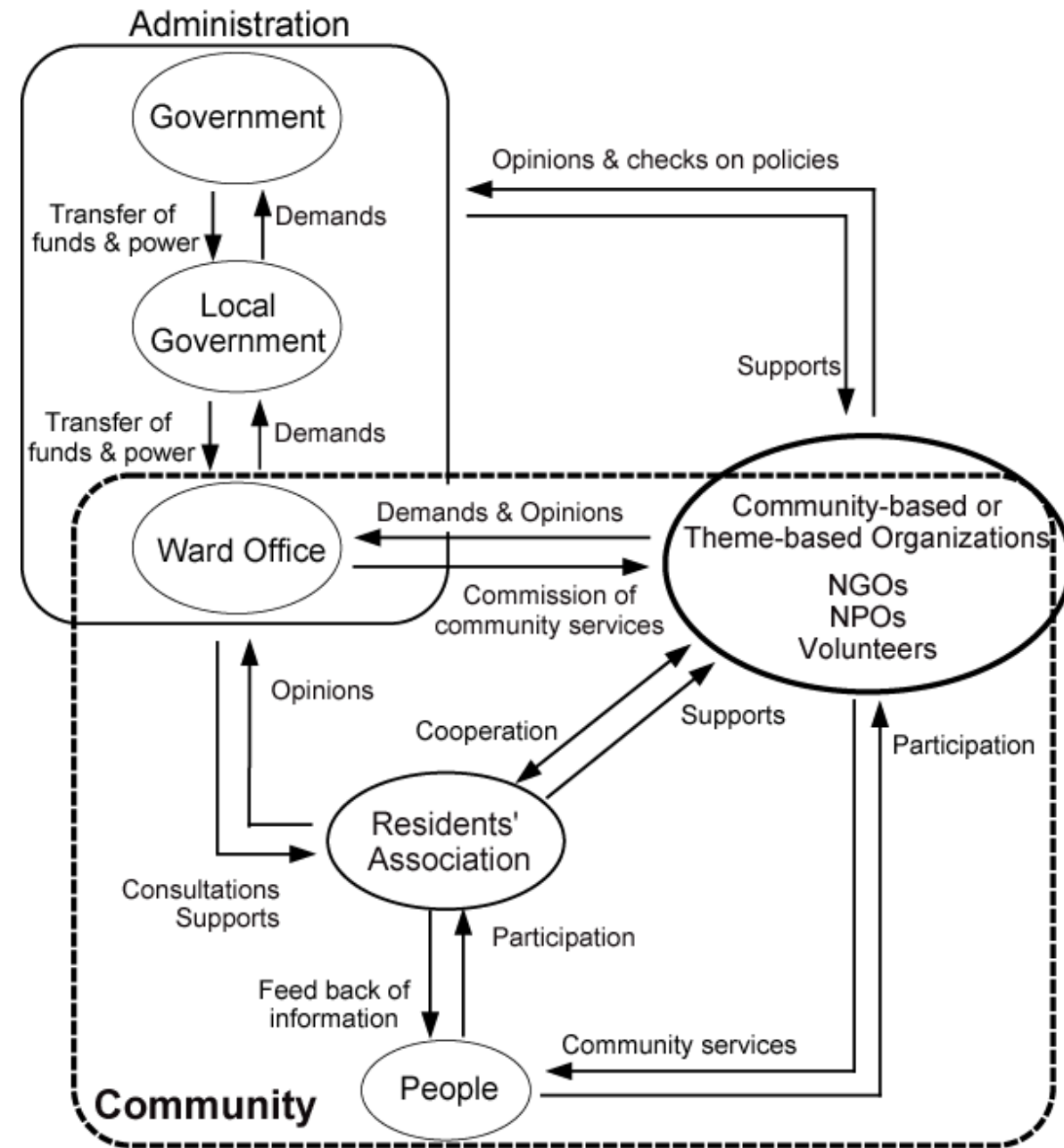
1995: Kobe Earthquake

Year Zero of Voluntarism in DRR

- Too many, without preparedness
- Putting too much pressure on local resources
- Post disaster volunteers: specialized voluntarism, urban planning, legal volunteers etc.
- Designated volunteer system
- J-VOAD



Future Civil Society



2011: East Japan Earthquake and Tsunami

Invisible voluntarism

- **Social media analyst** / twitter and line message analysis and put the local people's needs on the mapping application
- Very **invisible** but very important
- Self-help, mutual-help, public-help, **network-help**

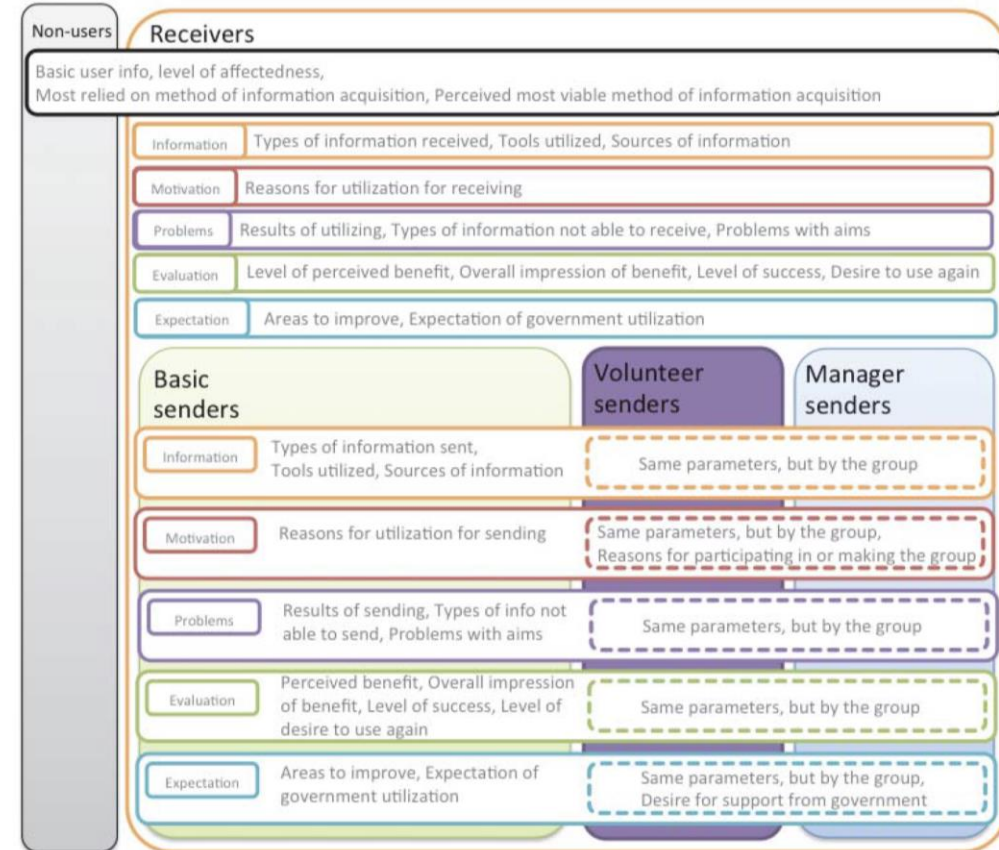
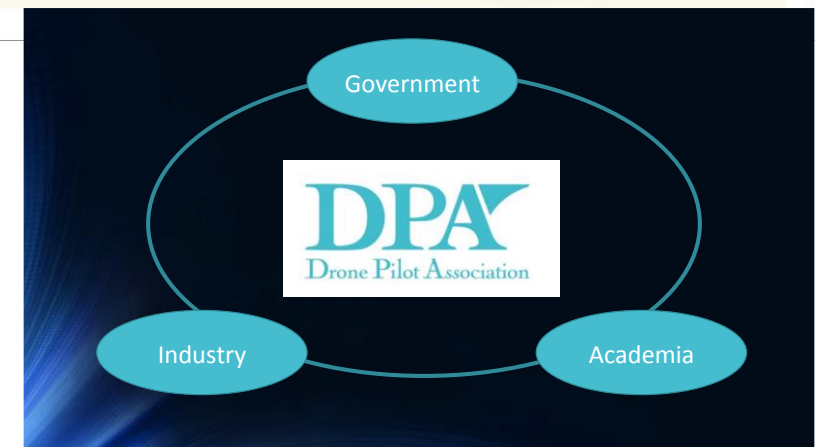
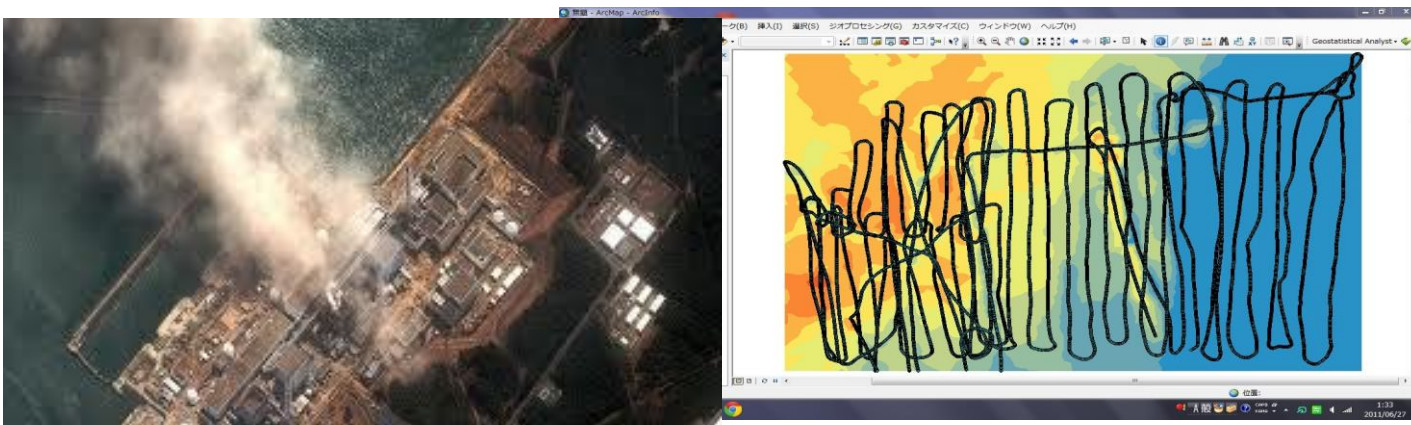


Figure 1. Theoretical structure of the online questionnaire survey

New technology and voluntarism

- Youth with new technologies
- Sky volunteers / drone facility
- Fukushima / Nepal / Indonesia



Adaptive voluntarism

- Kumamoto flooding of 2020
- Very little outside prefecture volunteers
- Local corporate sectors + university: provide some compensation for the students who lost their part time jobs during COVID



Organic nature of voluntarism

- **Flexibility** in the system to absorb volunteers
- Some basic system / data base / expertise is required
- **Recipient / host** is the most important: Adaptive community governance